


Introduction

With so many Clarity object libraries available, the features of each object may not be readily apparent.

This document is not intended to illustrate all objects and their features, only some hidden features you may not be aware of or unique ways that our customers have used the object in their applications.

Basic Library

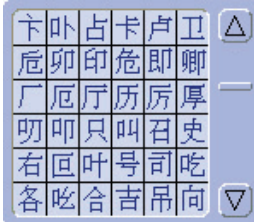
Gauge - When selected, the *showvalue* property automatically displays a numeric value of the bar height without having to add an extra text label.

Image - Making the background on your bitmap graphic transparent is easy using the eye dropper from the *transparentcolor* property 

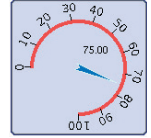
SmartScale - Use the *buddy* property of the *smartscale* to select the gauge to attach and adopt its properties (e.g. max, min).

Softkey - Particularly handy for QTERM-G55 users, the *softkeylist* property of the *softkeybar* object is invaluable when creating soft keys and configuring events.

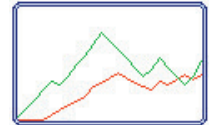
Spinner - The *buttonposition* and *arrowposition* properties can be combined to create twenty-four different spinner types.

SymbolGrid - This object is very handy when displaying and selecting extended ASCII or Unicode characters. Use the *maxcharvalue* (65535 for Unicode fonts) and *font* properties to access all displayable characters. 

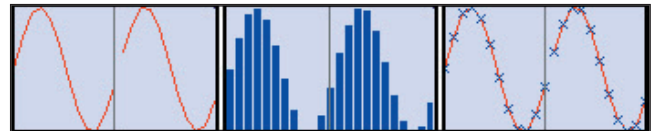
Tachometer - Creating an analog gauge to fit your application has never been easier. Using the *arcsize* and *rotation* properties you can create some unique gauges. These are only two of the thirty-seven different properties.



Trend - Using the *transparent* property will allow you to stack multiple charts on top of each other.




Hidden behind the *pointstyle* property dropdown is a list of six different trend chart styles. Select from bar charts and line charts.



Extra Library

AnimatedImage - Scroll through a series of bitmap images to create an animation.

Arrange a bitmap image like these fan blades so that each image is a frame in the animation. Images must be the same width and height. Specify the width of the frame in the *framewidth* property and how long you want the frame to be displayed before moving to the next frame in the *frameduration* property 

Clarity Foundry

Align / Distribute

Selecting several objects and right clicking the mouse displays a menu to align (right, left, center) the objects or distribute them evenly.

	Align left	Ctrl + Left
	Align center horizontal	Ctrl + PgDn
	Align right	Ctrl + Right
	Align top	Ctrl + Up
	Align center vertical	Ctrl + Shift + PgDn
	Align bottom	Ctrl + Down
	Make same width	Ctrl + Shift + Left
	Make same height	Ctrl + Shift + Down
	Space evenly horizontally	Ctrl + Shift + Left
	Space evenly vertically	Ctrl + Shift + Up